

## Pergo Extreme Installation Instructions – Uniclic Multifit

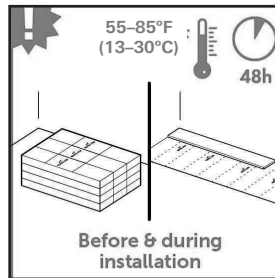
PRODUCT DESCRIPTION	INCLUDED STYLES	GRADE LEVELS	INSTALLATION METHOD
Rigid Vinyl Plank	Wood Enhanced, Wider Longer, Tile Options, Wood Originals	Above, On and Below	Uniclic Multifit

### Preparation

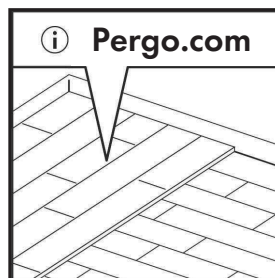
We recommend placing a single order for all cartons required for a commercial flooring project.

- Storage and Handling:** Always store and transport Pergo Extreme Luxury Vinyl Flooring on a flat surface to avoid distorting the product. Never store cartons upright, in moist areas, near heating and cooling appliances or areas with extreme temperatures. Pergo Extreme Luxury Vinyl Flooring must be acclimated in the room of installation between 55-85°F (13°-30°C) for 48 hours before installation. These temperatures should be maintained before, during and thereafter the installation is complete.

\*Installation in enclosed Three Season Rooms: acclimate product and room at 55-85°F (13-30°C) for 48-hours prior, during and 48 hours after installation is complete. Maximum installation span for Three Season Rooms is 40' x 40' (12.2m x 12.2m) with a 1/2" (13mm) minimum expansion for the perimeter or all vertical objects.



- Subfloors:** The type of subfloor, its quality and preparation will greatly affect the results of the final installation. All subfloors must be clean, flat, dry and sound. If the subfloor is not suitable for the installation of Pergo Extreme Flooring, then necessary corrections must be made. Contact your Pergo Extreme Flooring dealer for assistance as needed. Pergo Extreme Flooring can be installed over existing floor coverings, providing it is sound and securely attached. Existing flooring cannot be soft, damaged or loosely laid. Remove carpet, needle felt, cushion vinyl, floating laminate, floating LVT, perimeter adhered vinyl and floating hardwood. You may install directly over ceramic tiles, PVC, VCT, glued laminate, glued hardwood and fixed wooden boards, provided they are installed over a wooden subfloor. Skim-coat grout lines that exceed 1/8" in width.

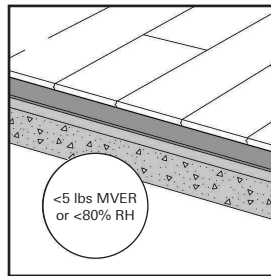


**WARNING! DO NOT MECHANICALLY CHIP OR PULVERIZE EXISTING RESILIENT FLOORING, BACKING, LINING FELT, ASPHALTIC "CUTBACK" ADHESIVES OR OTHER ADHESIVES.**

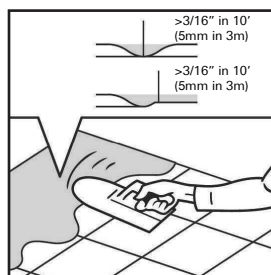
## Pergo Extreme Installation Instructions – Uniclic Multifit

Previously installed resilient floor covering products and the asphaltic or cutback adhesive used to install them may contain either asbestos and/or crystalline silica. The products in this carton DO NOT contain asbestos or crystalline silica. Avoid creating dust. Inhalation of asbestos or crystalline dust is a cancer and respiratory tract hazard. Smoking by individuals exposed to asbestos fibers greatly increases the risk of serious bodily harm. Unless positively certain that the product is a non-asbestos containing material, you must presume it contains asbestos. Regulations may require that the material be tested to determine asbestos content and may govern the removal and disposal of material. See current edition of the Resilient Floor Covering Institute (RFCI) publication “Recommended Work Practices for Removal of Resilient Floor Coverings” for detailed information and instructions on removing all resilient covering structures.

- Wood subfloor:** Remove any existing floor covering. Replace any water-damaged, swollen or delaminated subflooring. Ensure the subfloor is level and nail down any loose boards. Repair the wooden subfloor as needed or by installing 1/4" APA underlayment grade panels or leveling compound. Underlayment panels must be fastened in accordance with manufacturer's recommendation. OSB or particleboard subfloors should be covered with 1/4" APA underlayment grade panels to enable the floating installation to move as designed.
- The crawl space under the wood subfloor must be sufficiently ventilated with perimeter venting 1.5 sq. ft. per 100 sq. ft. of crawl space. All exposed soil in the crawl space must be covered with a 6-mil vapor barrier. The moisture content of the wood subfloor must not exceed 12% per 1000 sq. ft. using a pin-type meter. **NOTE: Do not install over wood attached to concrete. Instead remove wood and follow concrete subfloor instructions.**

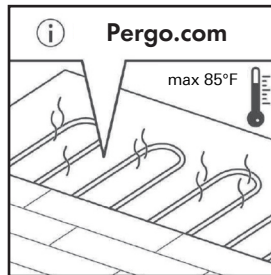


- Measure subfloor for flatness. Any unevenness greater than 3/16" in a 10' radius (5mm in 3m) must be leveled using a Portland based leveling compound. Level joints more than 1/8" (3mm) deep and 1/4" (6mm) in width with Portland based patching compound.
- Concrete subfloor:** The moisture content of the concrete subfloor must be less than 80% relative humidity (ASTM F 2170) or less than 5 lbs. moisture vapor emission rate (ASTM F1869). Always measure, record and keep moisture content results.
- Measure subfloor for flatness. Any unevenness greater than 3/16" in a 10' radius (5mm in 3m) must be leveled using a Portland based leveling compound. Level joints more than 1/8" (3mm) deep and 1/4" (6mm) in width with Portland based patching compound.



## Pergo Extreme Installation Instructions – Uniclic Multifit

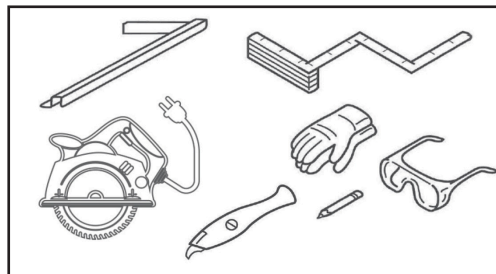
8. **Radiant floor heating** systems (hydronic or electric) must be embedded into the cement subfloor. Radiant heat system should be in operation a minimum of two weeks prior to installation of Pergo Extreme to eliminate excess moisture in subfloor. Turn system completely off and allow to cool completely before beginning installation. After Pergo Extreme has been installed turn the system on to the lowest setting. Increase temperature by 5°F (-15°C) every 24 hours until floor surface reaches the desired temperature not to exceed 85°F (30°C). Floor surface temperature should never exceed 85°F (30°C) or it may damage the flooring. Use of an in-floor temperature sensor as well as a separate thermostat for the individual room is required. An outdoor temperature sensor should be used to adjust water temperature according to heat loss. Separate rooms with and without radiant floor heating or rooms with different temperature controllers using a transition profile. We recommend Mohawk RevoFit<sup>™</sup> moldings, following manufacturer's installation guidelines and utilizing a 1/4-inch (6 mm) expansion gap 5/8 inch (16mm) for areas that will be exposed to temperatures greater than 85°F (30°C) to allow expansion and contraction.



Make sure that the subfloor is dry, flat, stable, clean and free of adhesive residue, surface contaminants or chemical substances. Remove all debris, sweep and vacuum. Repair surface imperfections and cracks. We recommend removing existing base trim and installing new moldings after installation of Pergo Extreme flooring is complete.



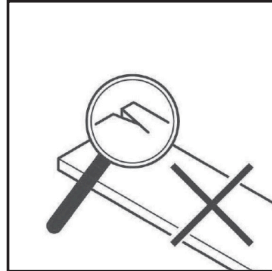
9. The following standard tools are needed: utility knife, tape measure, safety glasses, chalk line, speed square, tapping block, circular saw, gloves and a pencil. In addition to the standard tools, we recommend having a pull bar and a carpenter's square available.



**The use of any accessories other than Pergo Extreme accessories may cause damage to your Pergo Extreme flooring. In such cases, the warranty provided by Pergo will be void.** Therefore, we advise using only Pergo Extreme accessories, which have been specially designed and tested for use with your Pergo Extreme flooring. The RevoFit<sup>™</sup> molding can be used as a T-molding or reducer, and track may be stapled to wooden subfloors or glued, using a moisture-cured polyurethane based adhesive and following manufacturer's instructions. **Do not glue any transition strips or moldings directly to the floor.**

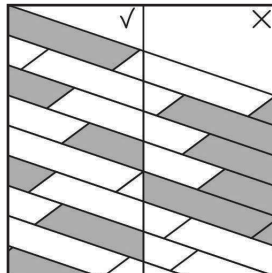
## Pergo Extreme Installation Instructions – Uniclic Multifit

10. Visually inspect all planks before and throughout installation in optimal lighting. Unacceptable planks should be discarded or, when possible, used as cut pieces to start or finish rows after removing the defective portion of the plank.

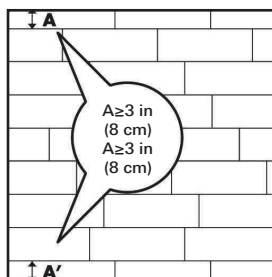


### Installation

1. During installation, blend the planks by working out of multiple cartons to avoid laying too many identical lighter or darker panels adjacent to one another. For optimal results, it is best to fit the panels in the direction of the longest wall and parallel to the light source in the room. Install plank flooring in a random method with at least a 12-inch (30 cm) stagger.



2. Measure the room before you begin installing flooring planks or tiles. Make sure that the last row of panels is at least 3 inches (8 cm) wide when finishing the installation. We recommend snapping a chalk line to ensure a perfectly straight installation.



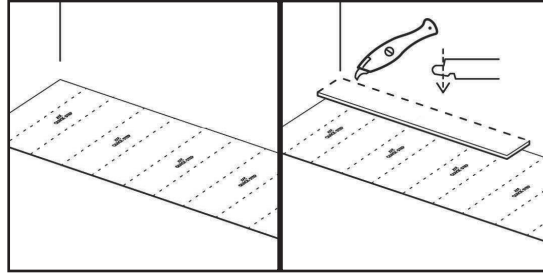
3. Pergo Extreme flooring has been designed for floating installations in indoor areas including enclosed three season rooms, protected from the elements with ambient temperatures ranging between 0 and 140°F (-17 and 40°C). Please contact your flooring dealer or Mohawk Technical Services 1-888-387-9881, Option 3 or email Mohawk\_Tech@mohawkind.com if you have any questions.



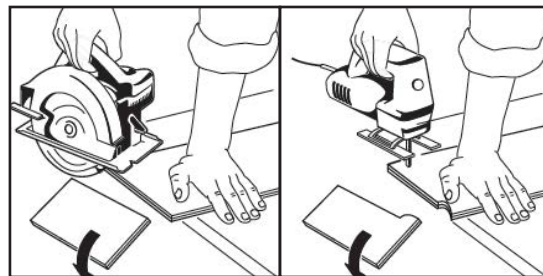
4. Pergo Extreme products with pad attached cannot be installed over separate underlayment.

## Pergo Extreme Installation Instructions – Uniclic Multifit

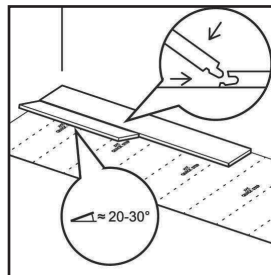
5. Begin in the left corner of the room. Start the first row with a whole plank. Cut off the long side tongue (end and edge) for the first panel. Position the cut edges adjacent to the wall.
6. Fit the plank with cut side against the walls. Make sure that you leave an expansion space of 1/4 inch (6 mm) [5/8 inch (16mm) for areas that will be exposed to temperatures greater than 85°F (30°C)] between the plank and the wall, using spacers as needed.



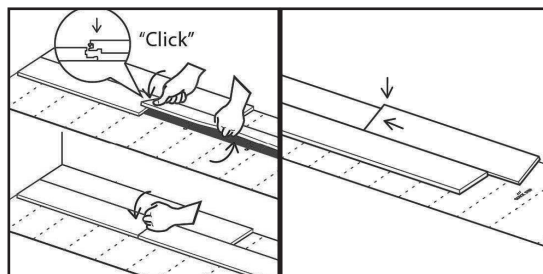
7. Cut using a circular saw or reciprocating jigsaw.



8. Turn the long side of the first panel of the second row into the already secured panel in the first row at an angle of 20 to 30°. Move the panel to be fitted slightly up and down; at the same time, exert some forward pressure. The panels will click together.



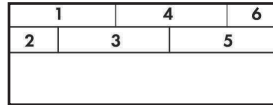
9. Then slide the third plank together horizontally. Slightly lift the plank to be installed by holding your hand underneath. Push the short side joint down gently with your thumb, moving from the inner corner towards the outside until you hear a “click”. Ensure the short side ends are closed by knocking gently on the short side click connection with the palm of your hand or tapping block.



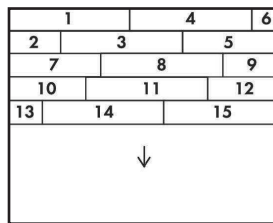
Next, connect the panels of the first two rows on the short sides.

## Pergo Extreme Installation Instructions – Uniclic Multifit

10. Check the expansion space to ensure it is at least 1/4 inch (6 mm) [5/8 inch (16mm) for areas that will be exposed to temperatures greater than 85°F (30°C)] and make sure the first two installed rows are perfectly straight. A chalk line can help ensure the installed planks are aligned. Adjust the straightness of your floor as necessary.



11. Continue installation row by row toward the opposite side of the room. Always check each joint to ensure a good locking connection before continuing to the next plank. Press down gently with your thumb on top of every short end joint to ensure a good locking connection.

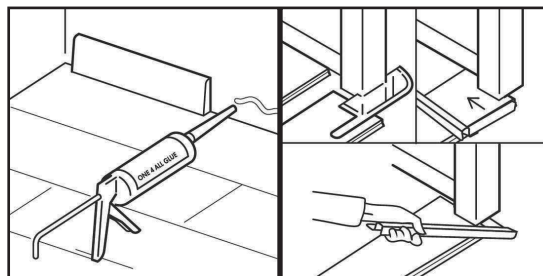


An expansion space of 1/4 inch (6 mm) [5/8 inch (16mm) for areas that will be exposed to temperatures greater than 85°F (30°C)] around the room perimeter and all vertical objects must be maintained; this same expansion space should be maintained when using transition moldings. Otherwise, there is no need for additional expansion space within or between rooms.

### Finishing

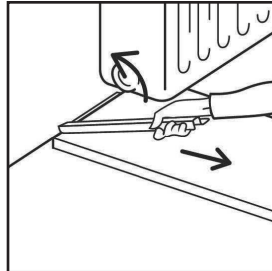
You may walk on your new Pergo Extreme floor immediately after installation.

1. Inspect the final surface of the installed floor. Install base molding to the wall. Never attach the base to the floor itself. In places where profiles or base cannot be installed, seal (do not fill) the expansion space with silicone.
2. When the new flooring meets a threshold or a doorway, we recommend undercutting the door jamb. To secure the right cut, turn a plank upside down and place it on the floor up to the door frame. Then place a handsaw flat against the plank and simply cut through the frame. Remove the cut-out piece and vacuum away debris. You can now secure the plank on the long side at the side of the door jamb. Use an installation tool pull bar to securely join the long and short joints.

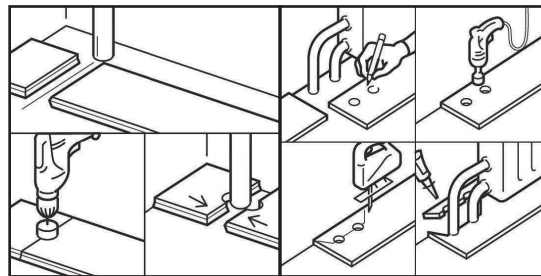


## Pergo Extreme Installation Instructions – Uniclic Multifit

3. If it is difficult to tilt the planks (e.g. under radiators), use a pull bar installation tool to pull the planks together.

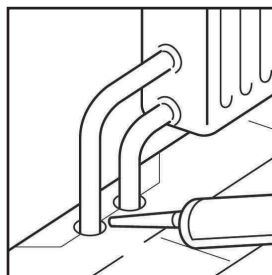


4. In rows where there is a pipe, make sure the pipe falls exactly in line with the short side of two planks. Select a drill bit with the same diameter as the pipe plus 1/2 inch (13 mm). Click the planks together on the short side and drill a hole centered on the joint between the two planks. Then install the planks.



5. For a double pipe, drill a hole equivalent to the diameter of the pipe plus 1/2 inch (13 mm) at each of the marked points. If located on the long side of the plank, make a 45° cut from each hole to the edge of the plank.

Apply Mohawk M7 Seam Sealer along the cut edges of the piece you cut out, seal the piece in place. Be sure no sealer comes between the cut-out piece and the subfloor.



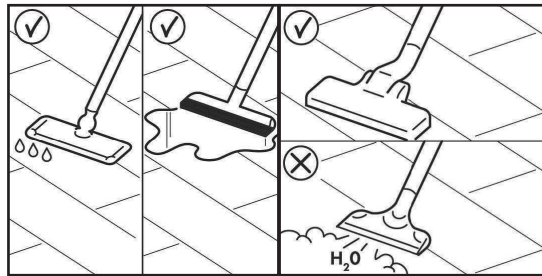
## Pergo Extreme Installation Instructions – Uniclic Multifit

### Maintenance

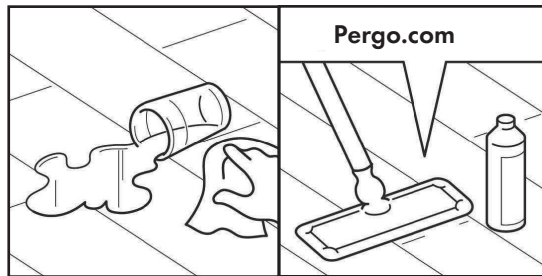
For full care and maintenance instructions for residential and commercial applications, please visit [na.pergo.com](http://na.pergo.com).

1. Use a vacuum cleaner suitable for hard surface flooring (with no moving parts and without rotary beater bars) to clean your Pergo Extreme floor. Care for your Pergo Extreme by using Mohawk Luxury Vinyl Cleaner 800-2 MOHAWK and a microfiber mop.

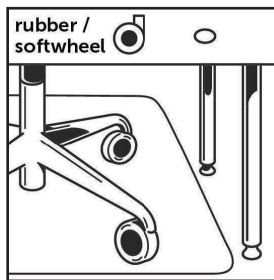
Never use a steam cleaner on your Pergo Extreme floor.



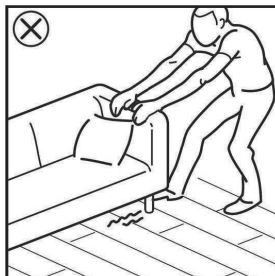
2. Remove spills from the floor immediately.



3. Protect the floor from furniture and chair legs by using felt pads or coaster protectors. Ensure chairs with casters have suitable soft neoprene wheels. Replace hard or plastic casters with soft wheels designed for a vinyl floor and/or use a suitable desk mat.



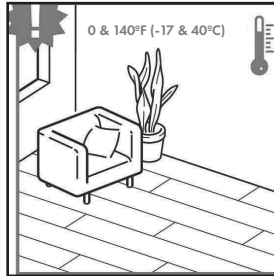
4. Never drag heavy items of furniture over the floor, always lift instead. Make sure furniture legs have a large surface area in contact with the floor and are affixed with non-staining floor protectors. The taller and wider the furniture feet are, the greater the disbursement of weight, which helps avoid damage to the floor.





## Pergo Extreme Installation Instructions – Uniclic Multifit

5. Ensure the interior room temperature is always maintained between 55°F - 85°F (13°-30°C). Three Season Rooms can be maintained between 0°F - 140°F (-17 and 40°C).



Place transition mats at all exterior entrances. Exterior mats should be constructed of dual fibers: soft fibers capable of absorbing moisture and coarse fibers to remove dirt and grime from shoe soles. Begin by purchasing two sets of exterior mats for each exterior entrance. Place one mat into service at all exterior entrances to reduce the amount of dirt, grit and moisture tracked into the interior. During routine cleaning remove the first mat for cleaning and replace with the second mat. Routine cleaning of exterior mats prevents them from becoming a secondary soil source.

Place interior mats at all interior entrances to capture any residual dirt, grit or moisture not removed by exterior mats. They should be constructed of breathable, non-staining back with an absorbent fiber. Remember to routinely clean the face and underneath interior mats so they don't become a secondary source of soil and allow soil and grit to become embedded underneath the mat and abrade the finish of your flooring.

A more frequent spot cleaning schedule is recommended when de-icers are being used.

Do not allow cigarettes, matches or other very hot items to contact the floor as this may cause permanent damage. Also, prolonged contact with items made from rubber can cause a permanent stain on the floor.

For technical assistance please contact your flooring dealer or Mohawk Hard Surface Technical Services at 888.387.9881, option 3 or email [Mohawk\\_Tech@mohawkind.com](mailto:Mohawk_Tech@mohawkind.com)